



Healthy Skin Aspirations

Bart Currie

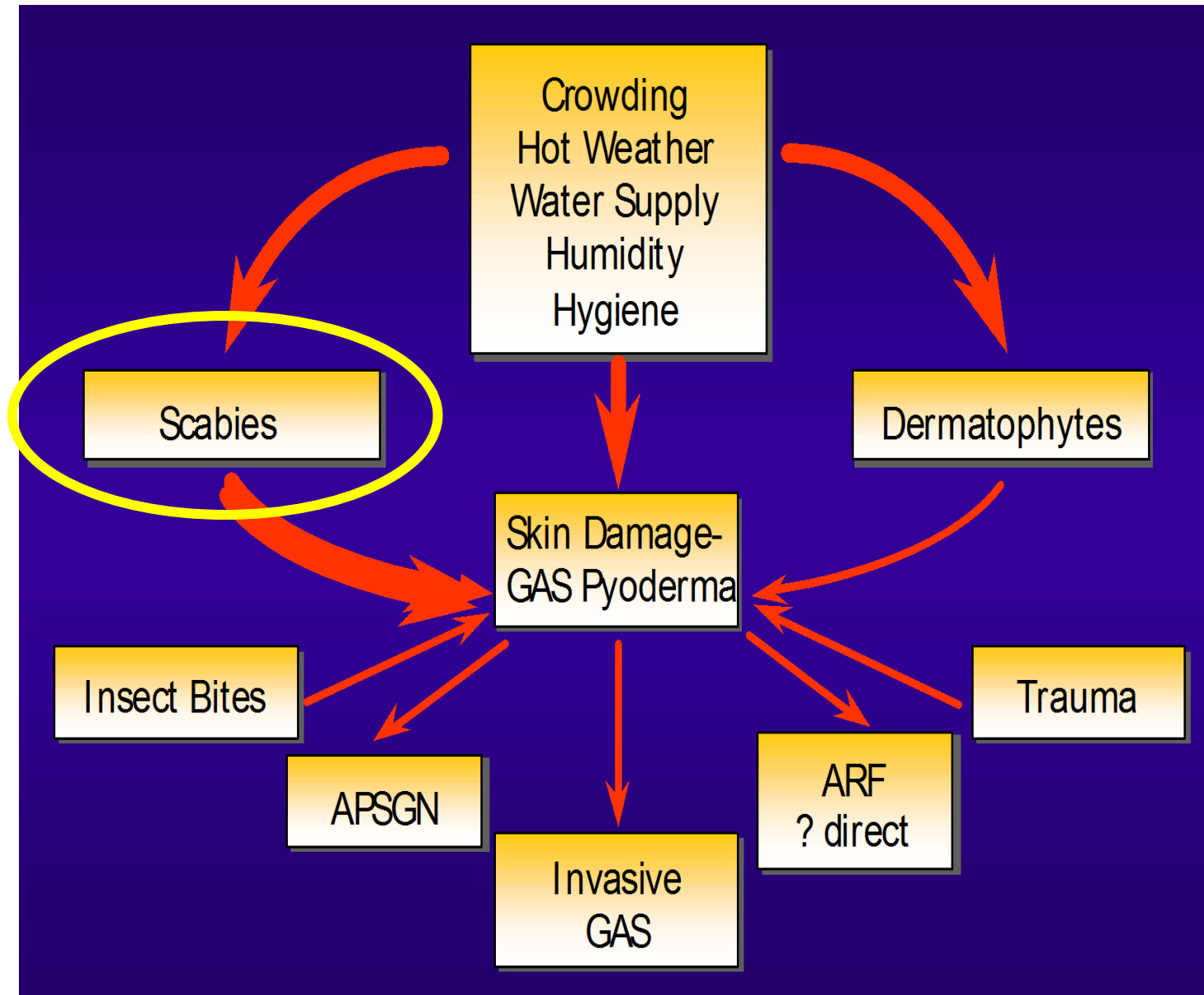
Infectious Diseases Department, Royal Darwin Hospital

**Global and Tropical Health Division, Menzies School of
Health Research at Charles Darwin University**

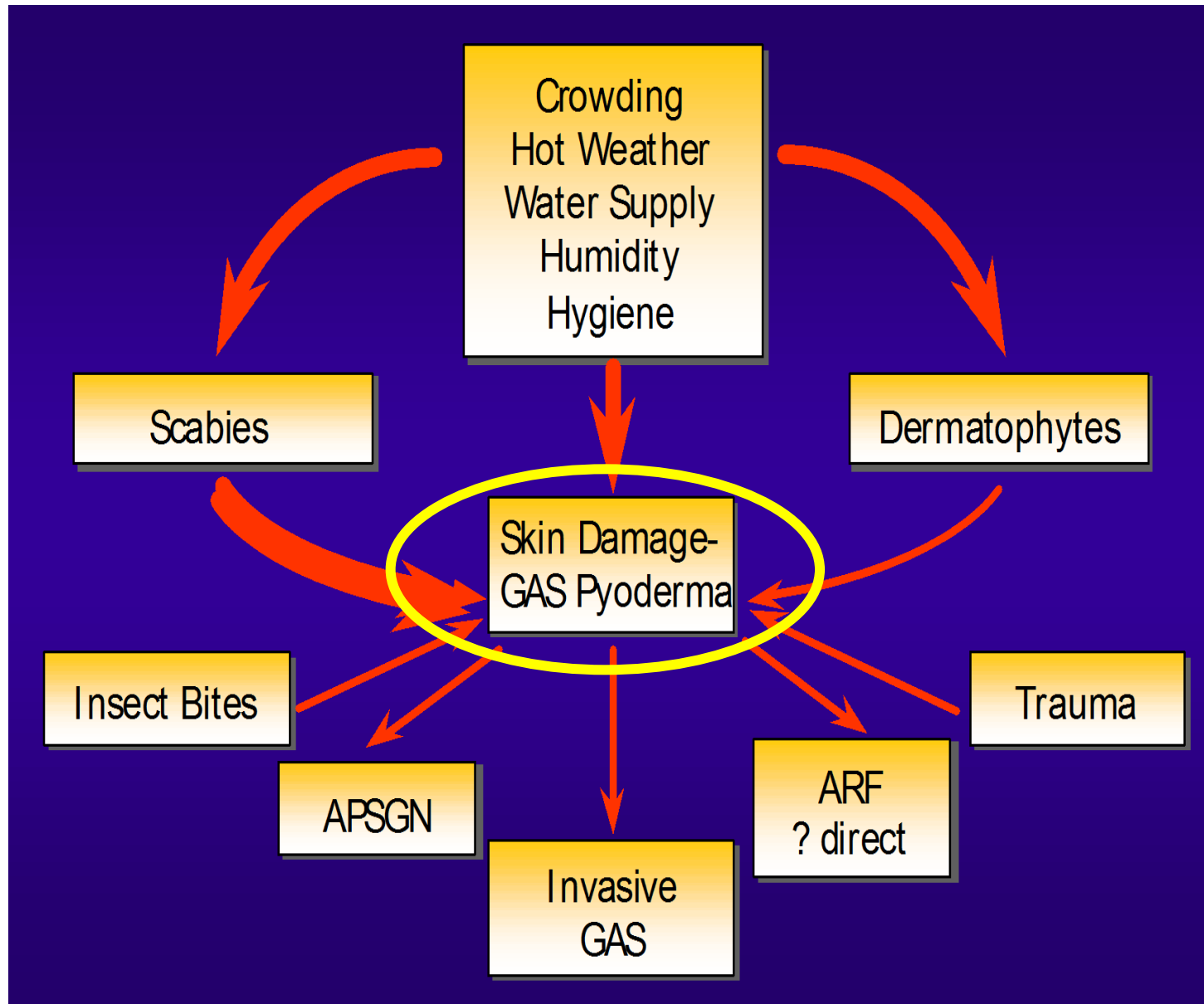
Scabies in Remote Communities

- Prevalences high
 - children up to 50%
 - adults up to 25%
- Underlie 50 - 70% of streptococcal pyoderma
- Multiple overlapping epidemic cycles
- “Core-transmitters” with hyper-infestation (crusted/Norwegian scabies) important in some communities

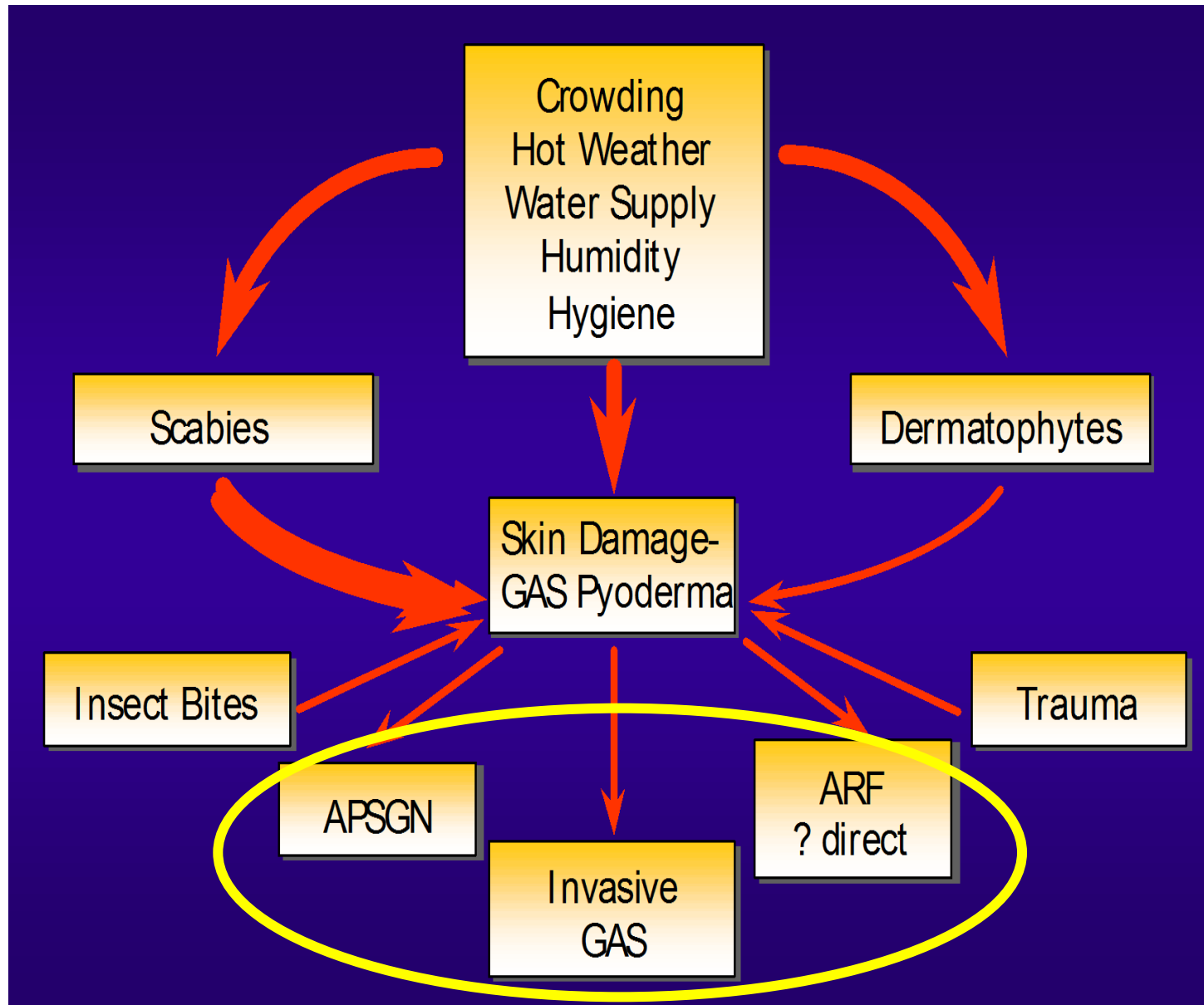
Sequelae of scabies



Sequelae of scabies



Sequelae of scabies



Extreme burden of scabies & skin sores in infants Remote Indigenous Australian Communities

Fig. 1. Presentations for scabies in two remote communities in East Arnhemland, January 2002 to September 2005^a

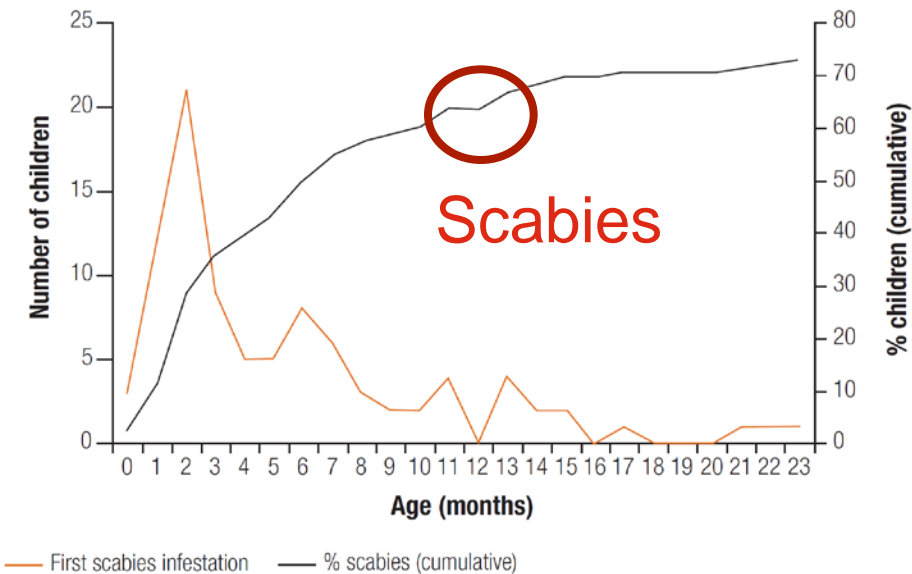
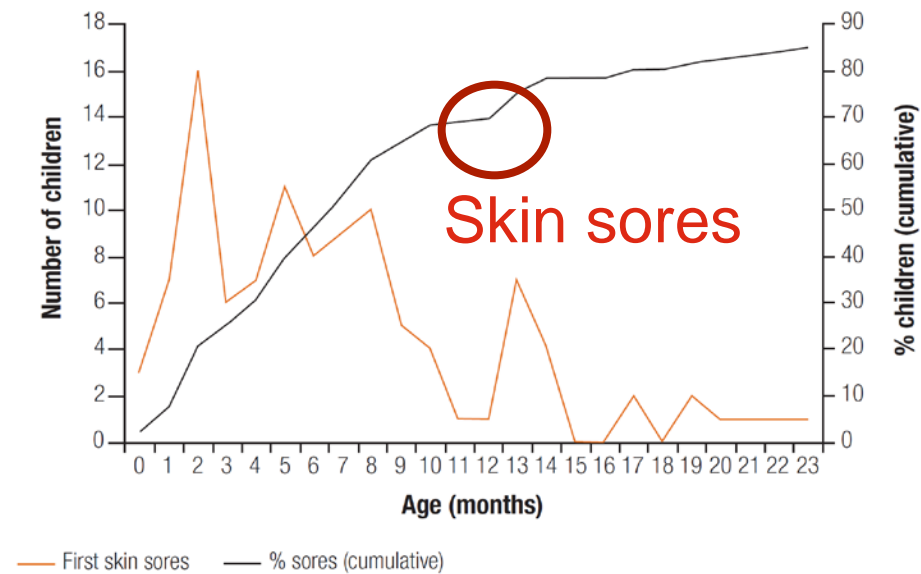


Fig. 2. Presentations for skin sores in two remote communities in East Arnhemland, January 2002 to September 2005^a



Clucas D et al.
Bull WHO 2008;86:275–81

“Normalisation” of skin disease

By clinic staff?

By hospital staff?

By school staff?

By parents, carers and family?

Analogous with the “cough” studies (A. Chang et al.)

“Normalisation” of skin disease

Skin Care Assessment in Broome & Port Hedland Project (SCAB Heal)

Yeoh DK, Anderson A, Cleland G, Banks A, Bowen AC

Children 0-15yo (median 3yo) admitted to hospital

Documented in charts Comparative “reality”

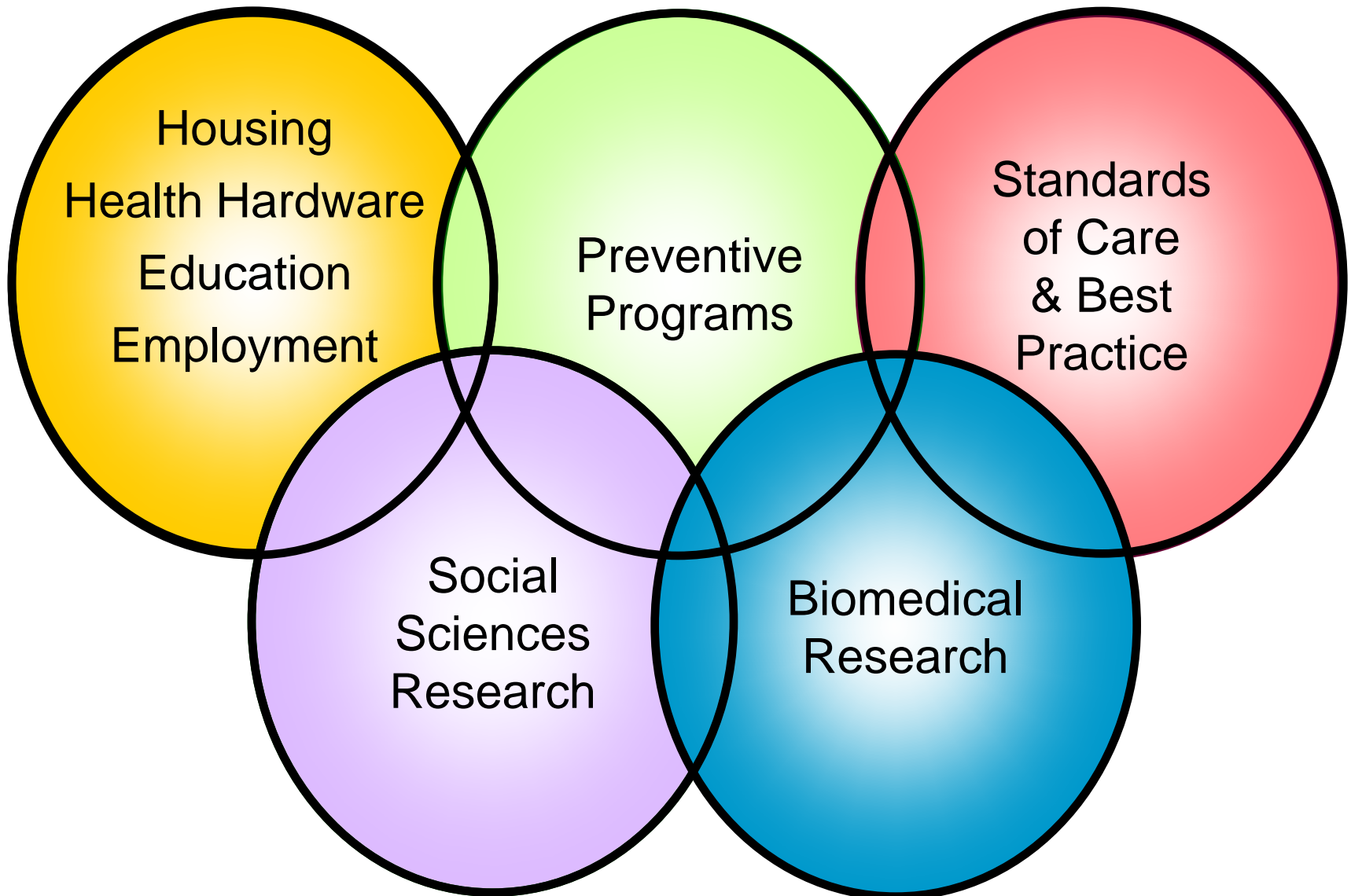
Any skin disease	21%	53%
Scabies	0%	8%
Impetigo	20%	49%
Tinea	3%	8%

ASID Poster April 2016

Socio-economic

Public Health

Clinical



Primordial prevention of scabies

- Housing
- Education
- Employment
- Communications
- Transport & access



McDonald E et al. BMC Public Health 2008; 8:153

McDonald M et al. Clin Infect Dis 2006;43:683-9

Bailie R et al. BMC Public Health 2010; 10:147

Primordial prevention of scabies and pyoderma and ARF/RHD and trachoma and ...

- Housing
- Education
- Employment
- Communications
- Transport & access

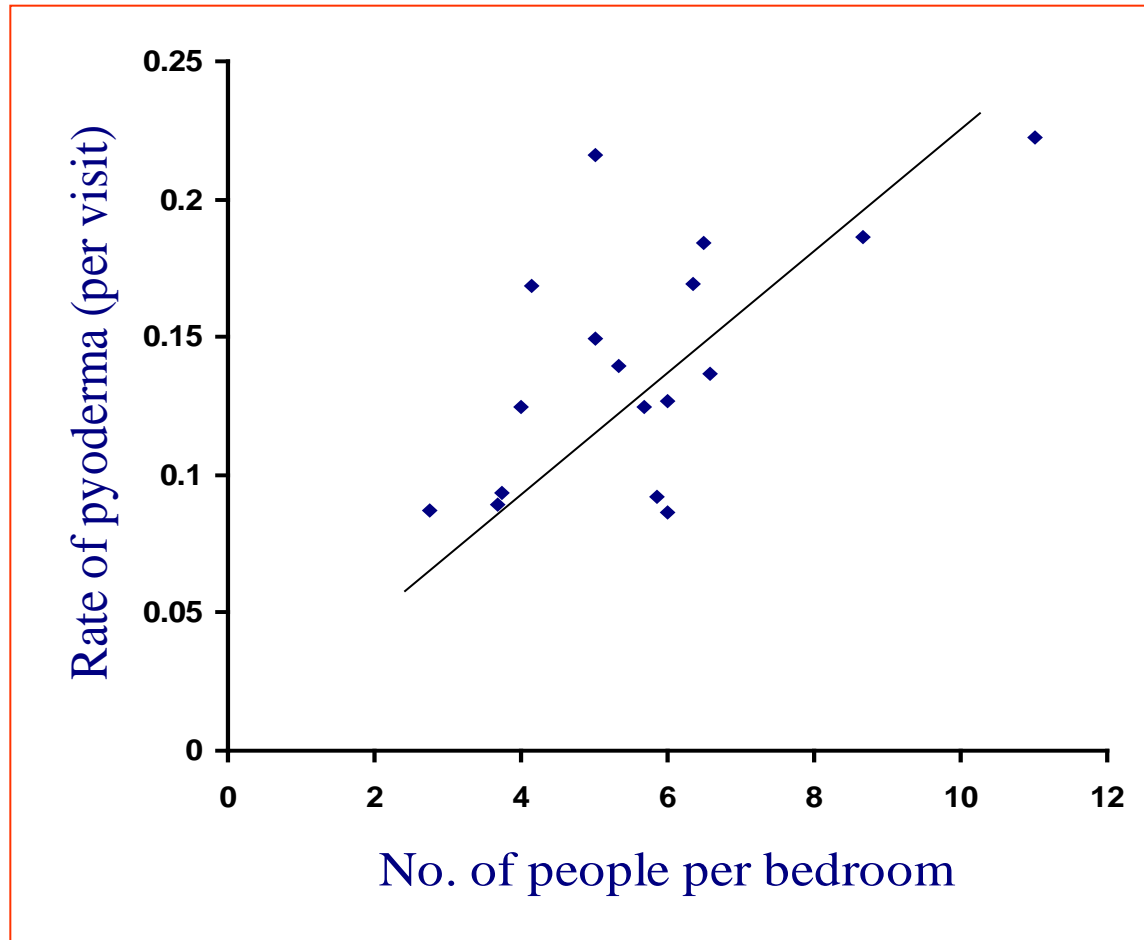


McDonald E et al. BMC Public Health 2008; 8:153

McDonald M et al. Clin Infect Dis 2006;43:683-9

Bailie R et al. BMC Public Health 2010; 10:147

Pyoderma and crowding



McDonald M et al. Clin Infect Dis 2006;43:683-9
Bailie R et al. BMC Public Health 2010; 10:147

The NEW ENGLAND JOURNAL *of* MEDICINE

ESTABLISHED IN 1812

DECEMBER 10, 2015

VOL. 373 NO. 24

Mass Drug Administration for Scabies Control in a Population with Endemic Disease

Lucia Romani, M.Soc.Dev., Margot J. Whitfeld, M.B., B.S., Josefa Koroivueta, M.B., B.S., Mike Kama, M.B., B.S., Handan Wand, Ph.D., Lisi Tikoduadua, M.B., B.S., Meciusela Tuicakau, M.B., B.S., Aminiasi Koroï, B.A., Ross Andrews, Ph.D., John M. Kaldor, Ph.D., and Andrew C. Steer, Ph.D.



October 30, 2015

RESEARCH ARTICLE

Impact of an Ivermectin Mass Drug Administration on Scabies Prevalence in a Remote Australian Aboriginal Community

Thérèse M. Kearns^{1*}, Richard Speare², Allen C. Cheng³, James McCarthy⁴, Jonathan R. Carapetis⁵, Deborah C. Holt¹, Bart J. Currie¹, Wendy Page⁶, Jennifer Shield⁷, Roslyn Gundjirryirr¹, Leanne Bundhala¹, Eddie Mulholland⁶, Mark Chatfield¹, Ross M. Andrews¹

Where to from here?

