

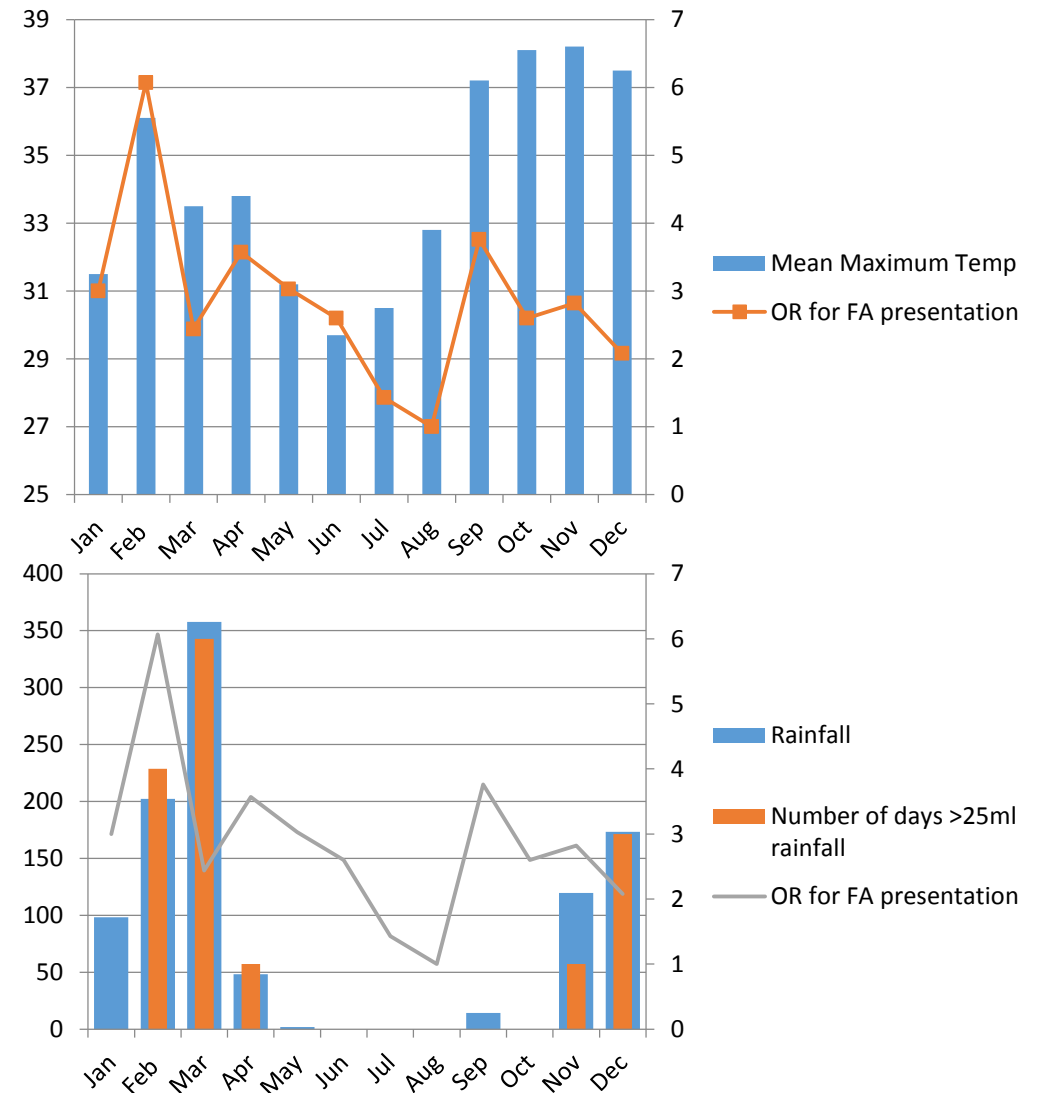
# **Frequent Attenders to Katherine Hospital**

**KISP and the Wellness Support Pathway**



# Who are the Frequent Attenders at KH?

		Frequent Presenters	Controls	<i>p value</i>
<b>Number of patients</b>		137	136	
<b>Age</b>		42.9yrs	40.8yrs	0.295
<b>Sex (female)</b>		57.7%	52.2%	0.272
<b>Indigenous</b>		70.8%	53.0%	<i>P&lt;0.001</i>
<b>Accommodation</b>	<b>Unstable</b>	48.1%	23.7%	<i>&lt;0.001</i>
	<b>Homeless</b>	19.7%	1.4%	<i>&lt;0.001</i>
<b>Alcohol contributing</b>		25.6%	10.8%	<i>0.001</i>
<b>Violence contributing</b>		15.3%	10.1%	0.189
<b>Triage category</b>	<b>1</b>	1	9	<i>0.004</i>
	<b>2</b>	7	7	
	<b>3</b>	41	24	
	<b>4</b>	79	96	
	<b>5</b>	9	3	
<b>Mortality at 2 years</b>		7.3%	2.9%	0.094



Quilty et al, Factors contributing to frequent attendance to the emergency department in a remote North Australian Hospital. **Med J Aust** 2016

# Wellness Support Pathway and KISP

- Fortuitous funding fell from the sky!
- Time Interrupted Series
- Data linkage
  - Katherine West, Wurli, Sunrise, Gorge Health
  - Katherine Hospital, St. Johns Ambulance
  - Births Deaths Marriages
  - NT Police, Corrections, Court House

# Eligibility Criteria

## Wellness Support Pathway

- >18
- Frequent attender to KH ED
- Able to consent

## KISP

- >18
- Frequent attender to KH ED
- Homelessness or insecure housing
- High-needs chronic health
- Vulnerable to alcohol misuse

# **Katherine Individual Support Pathway**

- Broad community partnerships – Government and Non-Government
- Collaborative case management

# **WSP/KISP imperative – prove that it works and demonstrate effectiveness for ongoing funding**

What we are competing with – the “alternatives”:



# WSP/KISP imperative – prove that it works and demonstrate effectiveness for ongoing funding

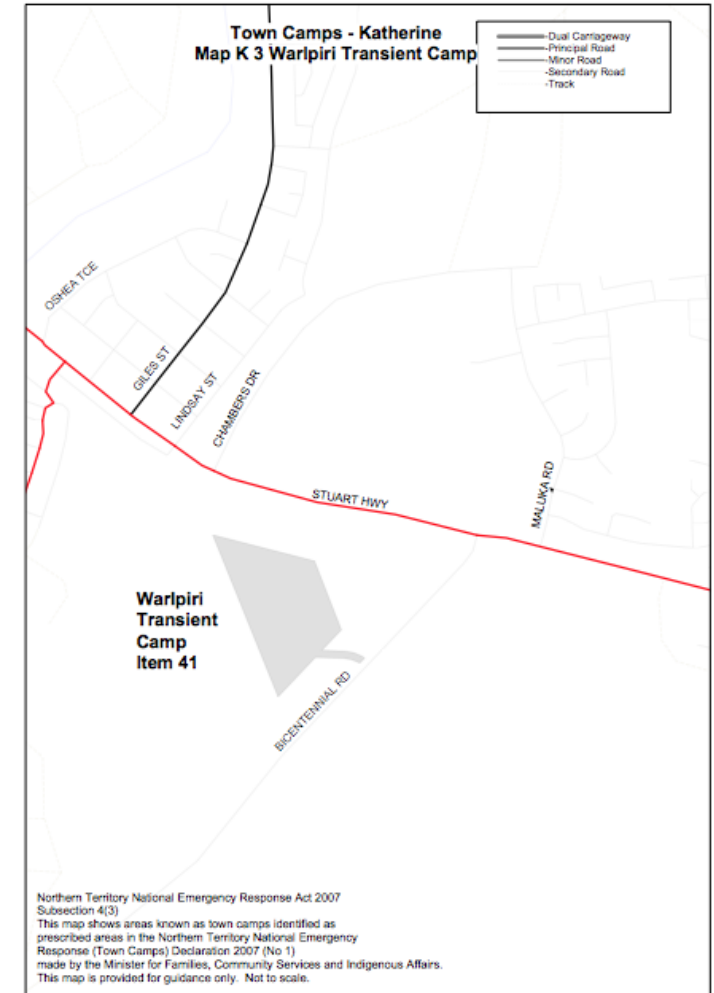
What we are competing with – the “alternatives”:





# WSP/KISP imperative – prove that it works and demonstrate effectiveness for ongoing funding

What we are competing with – the “alternatives”:



# KISP and WSP now up and going...

- 20 admissions to KISP
  - one not consenting for WSP
- 20 admissions to WSP
  - one non-indigenous, not eligible for KISP

# **Climate Change Action**