

Elders & Cancer

E Tipu E Rea



John Waldon (UNSW & 2Tama Ltd)
**Te Huinga a Matariki Ki Tuhoe Maori Women's
Welfare League (Ruatoki)**

Being Affected by Cancer

- Cancer survivors, their carers & family
 - Interviewed 2010-2013
 - Transcription
 - Analysis
 - Group thematic analysis
 - Identifying thematic threads
 - Grouping threads into themes



Data Collection

- Face to face
 - At a place convenient to participant
 - By a person they were comfortable
 - In the language they were most comfortable



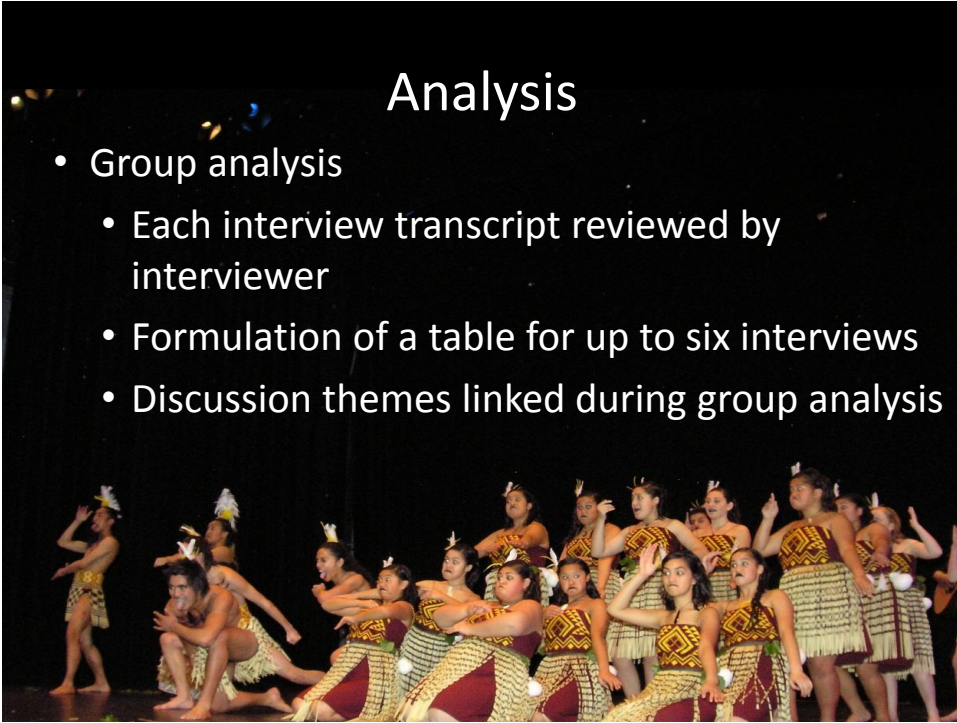
Demographic Data

	Male (n=15)	Female (n=51)	All
Average Age (years)	52.0	49.6	51
Education –graduate (%)	25	12	13
Good experience, average (%)	50 (50)	82 (18)	84 (20)
Ethnicity –(Māori/European/unknown)	100	79/16/5	86/14/5
Household languages (English only, %)	75 %	53 %	57 %



Analysis

- Group analysis
 - Each interview transcript reviewed by interviewer
 - Formulation of a table for up to six interviews
 - Discussion themes linked during group analysis



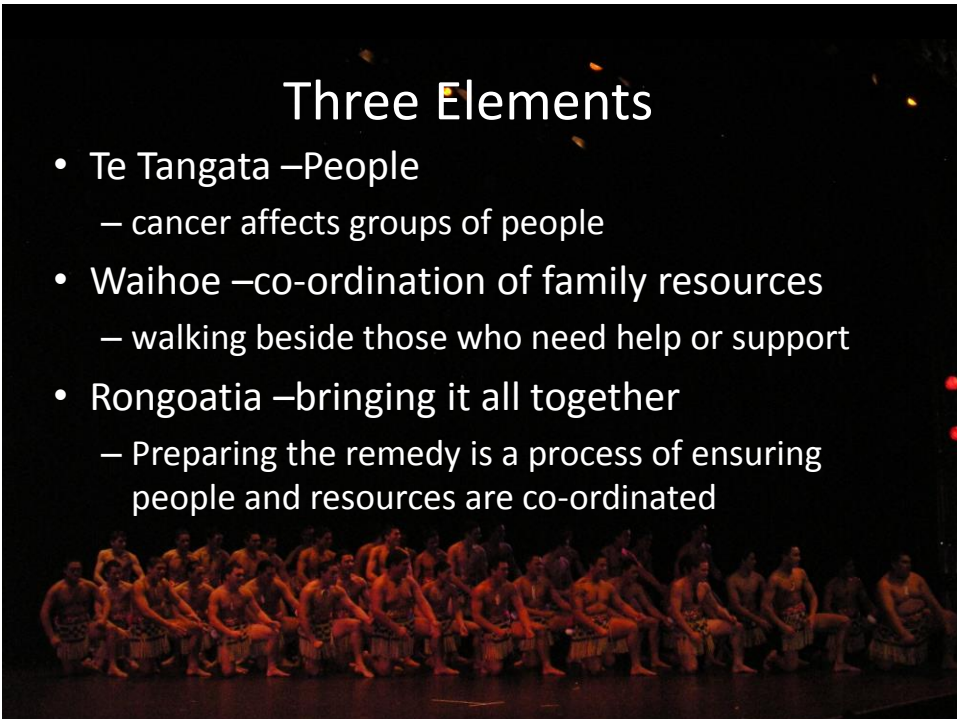
Findings

- All participants recall a cancer diagnosis
 - The shock of diagnosis
 - Not all had close family ties at the time
- Most were discharged from treatment
 - Some were still being treated
 - Some were receiving palliative care
- All now valued their family
- All held their doctors in highest regard

- The People Affected by Cancer
 - Cancer affects whole groups of people
 - Understanding of cancer varies
- Co-ordinated Effort
 - Cancer heralds a time of uncertainty
 - Co-ordinating family with care and treatment
- The Remedy
 - The right people around the table
 - Care & Support along cancer continuum

Three Elements

- Te Tangata –People
 - cancer affects groups of people
- Waihoe –co-ordination of family resources
 - walking beside those who need help or support
- Rongoatia –bringing it all together
 - Preparing the remedy is a process of ensuring people and resources are co-ordinated



Conclusion

- Higher quality of cancer information
- Assistance to people affected by cancer
- Follow up after formal discharge from treatment



